

Siebert
Engineers,
Inc.

PREPARED BY PLANNING DESIGN, LLC
MANAGEMENT OF CAPITAL DEVELOPMENT SERVICES
301 BROADVIEW LAKE SOUTH
LOMAVILLE, MISSOURI 64086
PHONE: 636-368-0020

COPYRIGHT © 2001
SIEBERT ENGINEERS, INC.
ALL RIGHTS RESERVED

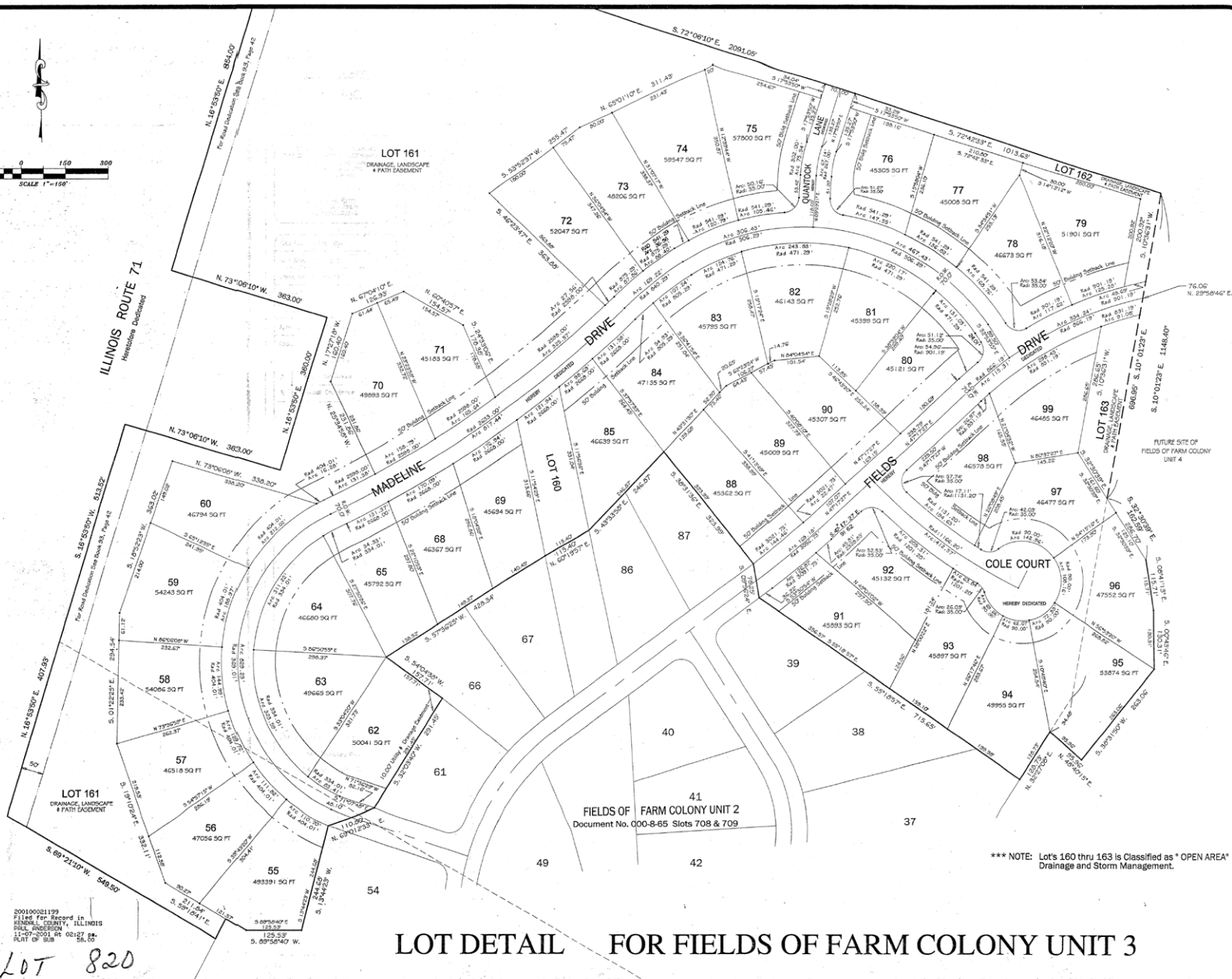
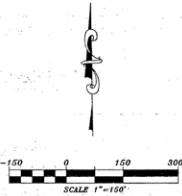
CAD File: 5847.rpt.dwg
Start Date: 4-23-2001
Drawn by: RWJ/gsl
Designed by: RWJ
Checked: TOF
Approved: TOF
Change: 8953

No.	Revision/Issue	Date
A	Issued for Review	5-30-01
B	Kendall Co. Review	9-4-01

INLAND
Real Estate
Development Corporation
2901 Butterfield Road
Oak Brook, Illinois 60523

Part of Subdivision
FIELDS OF FARM COLONY
UNIT 3

Project	5847	Revision	B
Date	9-4-2001	Sheet	2 of 3
Scale	1" = 100'		



SLOT 820

LOT DETAIL FOR FIELDS OF FARM COLONY UNIT 3

200100021199
Filed for Record in
KENDALL COUNTY, ILLINOIS
MICHAEL J. JOHNSON
11-07-2001 PM 02:57 PM
SHEET 2 OF 3