

The Brookhaven



FRONT ELEVATION



LEFT ELEVATION

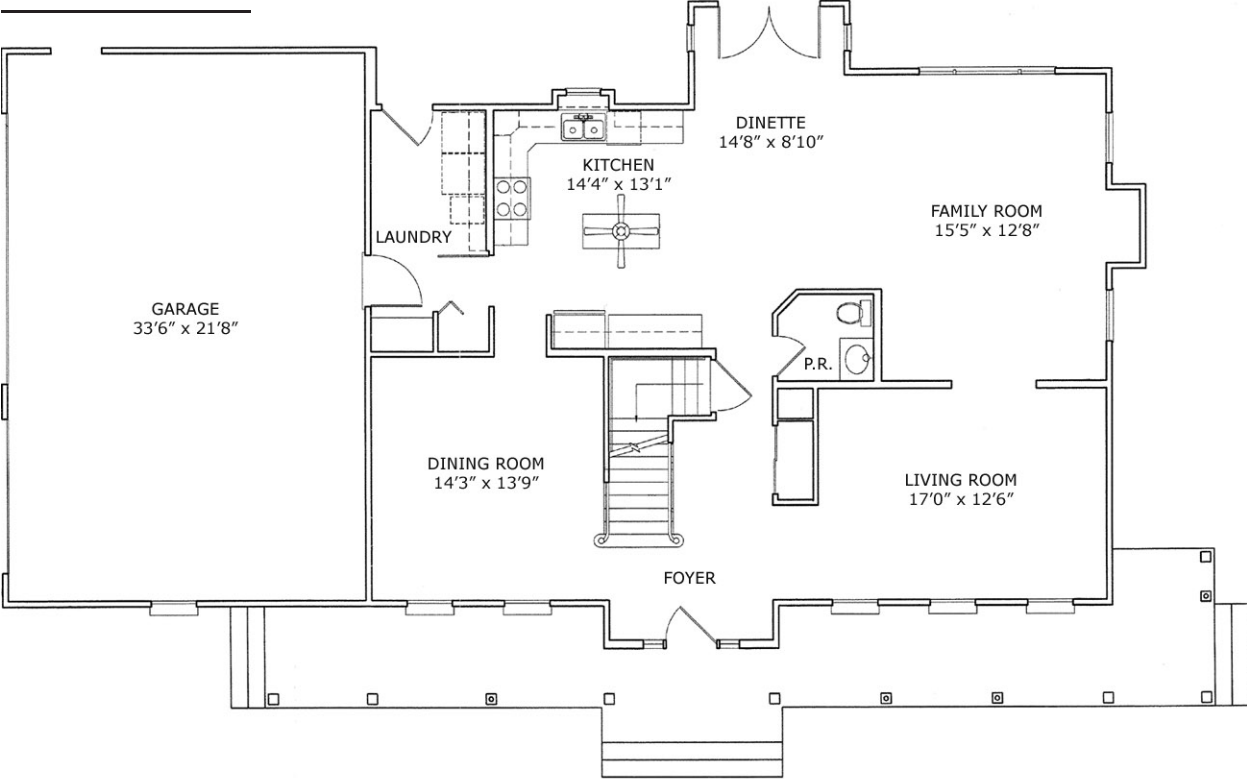


RIGHT ELEVATION

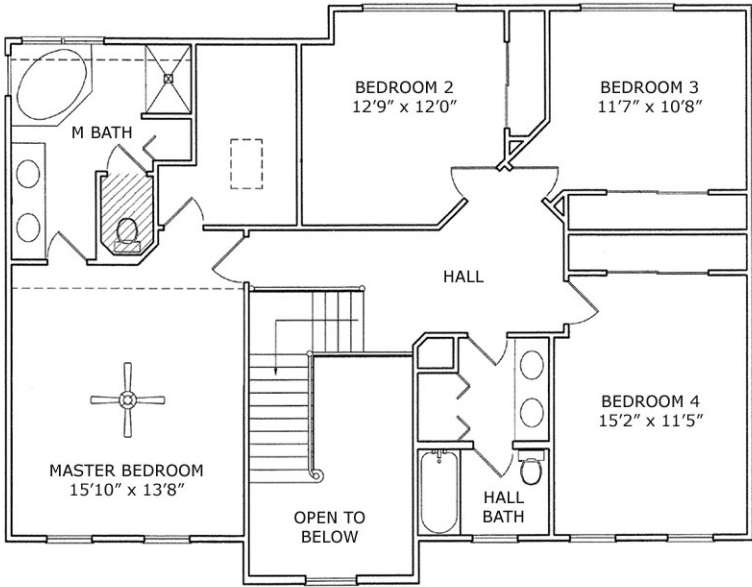


REAR ELEVATION

The Brookhaven



FIRST FLOOR PLAN



SECOND FLOOR PLAN

CHICAGOLAND CONSTRUCTION CO.
BUILDING AND LAND DEVELOPMENT

Exterior Features

- ❑ Energy efficient Weathershield wood double hung windows with no maintenance aluminum or vinyl cladding, insulated glass and screens, grills and circle-top windows.
- ❑ Private entry with deluxe front entry doors with energy efficient insulated foam core, integral threshold and weather-stripping. Attached two car garage, with private entry to each home.
- ❑ Professionally landscaped lot with sodded front yards.
- ❑ Large, private, asphalt driveway.
- ❑ Maintenance-free aluminum gutters and downspouts.
- ❑ Reduced maintenance beveled-cedar siding and exterior trim boards finished with Olympic Oil base stain.
- ❑ Custom garage door.
- ❑ Concrete patio.
- ❑ Frost-proof hose bibs front and rear.
- ❑ Exterior ground fault circuit interrupter outlet at front and rear.

Interior Features

- ❑ Full basement.
- ❑ Laundry room on first floor pre-plumbed for optional washer & gas dryer.
- ❑ Quarry tile entry foyer.
- ❑ Custom oak stairway spindles, baluster and railing.
- ❑ Pine millwork painted with a high quality enamel paint.
- ❑ Choice of quality wall to wall carpet and pad.
- ❑ Choice of ceramic floor tile in bathrooms.
- ❑ Cathedral ceilings in all bedrooms.
- ❑ Volume ceilings in all bedrooms.
- ❑ Volume ceilings in entry foyer and family room.
- ❑ Gas forced air furnace.
- ❑ Telephone and cable TV pre-wire. (2 cable, 2 phone outlets)
- ❑ Smoke or heat detectors on all levels.
- ❑ Light fixtures included.
- ❑ Fluorescent lights in all closets.
- ❑ Drywalled and insulated garages.
- ❑ Schlage hardware.

Kitchen Features

- ❑ Kenmore Appliances
 - 30" gas range (with oven window & clock)
 - 20.6 CF Frostless refrigerator/freezer
 - Automatic dishwasher
 - Range hood (vented)
- ❑ Stainless steel, double bowl kitchen sink with Moen single handle, high neck faucet.
- ❑ Oak cabinets per plan.
- ❑ Choice of no-wax vinyl floor tile in kitchens.
- ❑ Choice of formica counter top decorator colors with back-splash.
- ❑ Light above kitchen sink.
- ❑ Ground fault circuit interrupter outlets.

Bath Features

- ❑ Whirlpool tub in master bath.
- ❑ Separate shower in master bath.
- ❑ Moen Chateau plumbing fixtures.
- ❑ Oak vanity base and medicine cabinet/mirror combination.
- ❑ Cultured marble vanity tops.
- ❑ Exhaust fans and heat lamps per plan.
- ❑ Ground fault circuit interrupter outlet.
- ❑ Recessed can lighting over vanities per plan.
- ❑ Deluxe plumbing fixtures (white).

Construction Features

- ❑ Energy saving 3.5" R-13 rated fiberglass batt wall insulation and 9" R-30 fiberglass insulation in the ceilings.
- ❑ 235 lb. Seal tab type roof shingles with 15 lb. Felt.
- ❑ Separate storm water and sanitary sewer systems.
- ❑ Copper plumbing water supplies.
- ❑ 50 gallon gas hot water heater.
- ❑ 100 amp electrical service with circuit breakers.
- ❑ Vent for clothes dryer.
- ❑ Laundry station hook-up pre-plumbed.
- ❑ Fresh air/combustion air intake.